



LV JUICE

RAYCHEM CABLE CLAMPS

Raychem cable clamps have a patented design which optimises clamping force at both the attachment point, and the cable by securing each clamp half separately. Cables can be aligned and located in the bottom half of the clamp prior to the final tightening.

Clamps come complete with all fasteners, no chance of coming up short on the job. Available in single, double and trefoil configurations.

FEATURES

- Integral stainless steel clamping plates ensures consistent clamping pressure on both sides
- Range-taking elastomeric inserts accept cable diameters from 26-106mm (more coming soon)
- Elastomeric inserts can accommodate round, oval or “tri-round” cable profiles
- Impact resistant, Halogen free, self-extinguishing, UV stabilised materials
- Available in a strut nut configuration
- Bottom half of clamps can be mounted prior to cable fitment
- Smooth aesthetics improve overall strength while in operation
- Part numbers & cable ranges moulded into top of clamp for easy product identification
- Captive elastomeric inserts for increased cable protection and containment
- Can be used as an individual unit or stacked
- Can be mounted using centre bolt or two bolts at extremities
- Fits standard 40x40mm strut, as well as narrow 25x40mm strut on request
- Optimised for harsh environments with all stainless steel hardware
- Designed & independently tested to meet all requirements of IEC61914



Raychem
from TE Connectivity



This Month

EARTHING SOLUTIONS
PAGE 3

CABLEAWAY ALUMINIUM SKIRTING DUCT
PAGE 4

WIN A CHILLY BIN SCOOTER WITH #TRANSNETHAVEABALL
PAGE 8

FREE TRANSNET BOTTLE OPENER
WHILE STOCKS LAST

When you spend over \$600 (excl GST) on one invoice this month

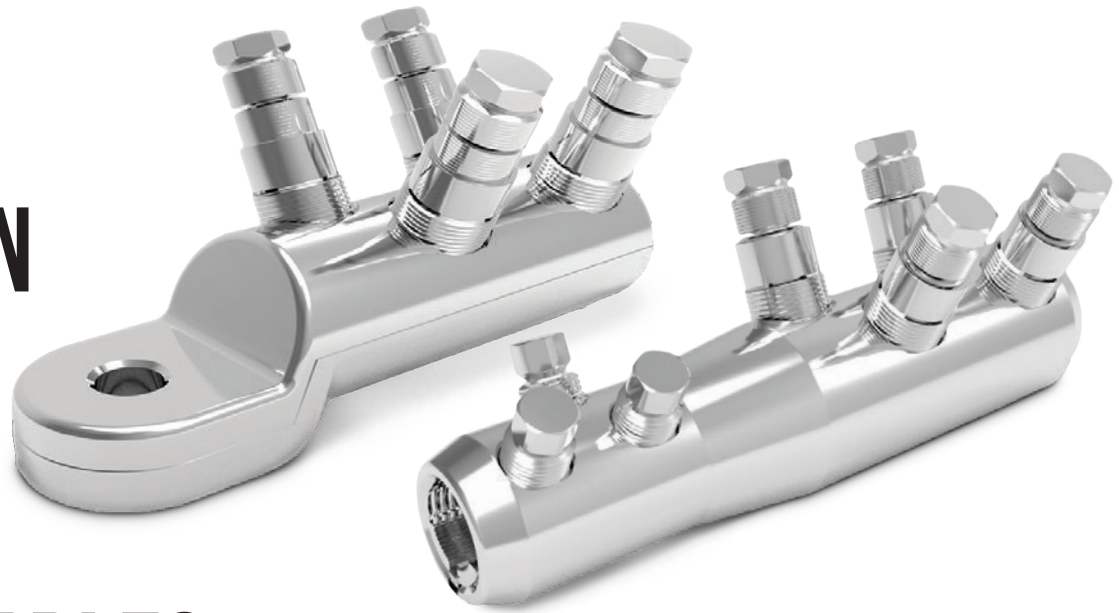


www.transnet.co.nz





EASY & SECURE CONNECTION SYSTEM FOR ALUMINIUM FLEXIBLE CABLES



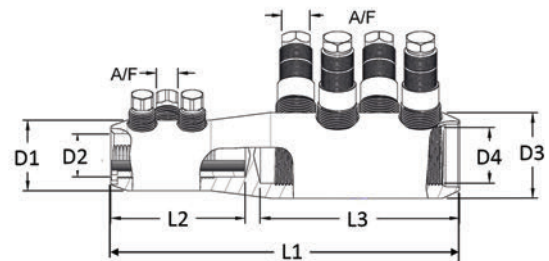
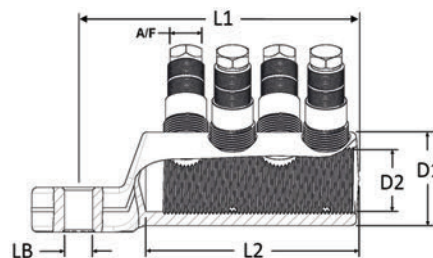
TE Connectivity's BSMB and BLMT-FLEX mechanical connectors and lugs are designed for use in low and medium voltage applications up to 42 kV, and consist of high tensile aluminium tin-plated body and shear-head bolts. Lugs are suitable for outdoor and indoor applications and are available with different palm hole sizes.

FEATURES

- Easy and secure connection system for Aluminum flexible cables tested to IEC-61238-1 Class A
- New patented two step shear off bolts provide pre-determined torque & ensure reliable and secure contact without damaging fine Aluminum strands
- Easier and faster installation without application tooling and reduced number of bolts
- To be available for cable cross sections 70 mm² through 500 mm²
- Dual range connectors available for connecting Cu – Al and Al – Al combinations for class 5 & class 2 conductors

Cat No.	Cross Sectional Range (mm ²)		Dimensions (mm)							Contact Bolts Quantity		Head Size AF (mm)	
	Class 2 Conductors	Class 5 Flexible Conductors	L1	L2	L3	D1	D2	D3	D4	Side 1	Side 2	Side 1	Side 2
BSMB-150/400-400-FLEX	150/400	300/400	210	80	120	42	25.5	51	33	3	4	13	17

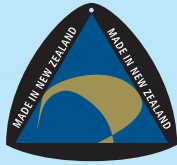
Cat No.	Cross Sectional Range (mm ²) Class 5 Conductors	Palm Hole Diameter (mm) LB	Dimensions (mm)				Contact Bolts Quantity	Head Size AF (mm)
			L1	L2	D1	D2		
BLMT-400 FLEX-15	300/400	15	150	115	51	33	4	17
BLMT-400 FLEX-17	300/400	17	150	115	51	33	4	17
BLMT-400 FLEX-21	300/400	21	150	115	51	33	4	17





HORIZONTAL EARTH KIT FOR TOUGH APPLICATIONS

NEW
ZEALAND
MADE



FEATURES

- Designed & manufactured in NZ to meet the requirements of AS/NZS 3000
- Cadweld exothermic connection blocks water and is resistant to corrosion as required in 5.5.5.3
- 10m of 6mm² earth wire allows for easy placement in any situation
- Additional sizes and lengths available on request

Exothermic
Welded
Connection

Product # TNHEK25/6

ERICO[®]

COMPLETE EARTH FOR STREETLIGHT POLES



Product # TNSLGR3

TNSLGR3 FEATURES

- 13mm copper bonded rod
- Pre-welded
- 3m of 10mm² cable attached
- Cadweld and copper conductor included
- Able to be buried
- Position of the weld allows driving tip
- Room under ground for connection
- ERICO rod 1840mm long

PICTURED WITH
#TNERIB EARTH ROD
INSPECTION BOX &
#TNEARTH TAG
(NOT INCLUDED)

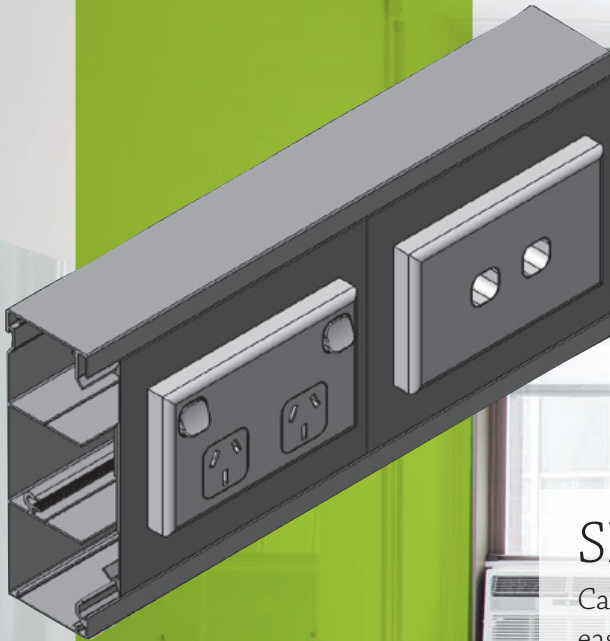
ERICO[®]





**cable.
away**

SD501503DIV

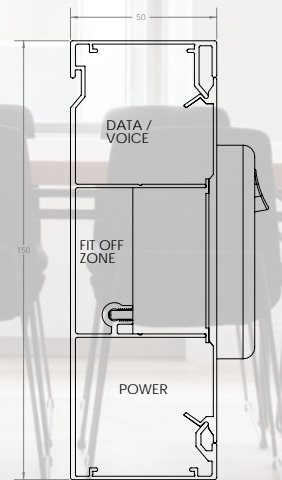


SD Series Aluminium Skirting Duct

Cableaway's skirting duct range is by far the easiest way for housing and distribution of power and data cabling, from large commercial offices to the small home office.

Cableaway's 50mm x 150mm x 3 division skirting duct is perfect for the reticulation and mounting of power, Cat 5, Cat 6 and Cat 6A data cabling.

Cableaway's skirting duct is also able to handle Audio and Visual cables using Cableaway's 45 series multimedia outlets, making it easier than ever to adapt microphone jacks, HDMI, VGA, component and much more.



Suitable for
CAT5
CAT6
CAT6A
Data Cables

EXTRUDED ALUMINIUM BODY
DIECAST BLANK ENDS
DIECAST CORNERS
CENTRE MOUNTING OF OUTLETS
GPO MOUNTING KIT
DATA MOUNTING KIT

AVAILABLE WITH DROP IN OR CLIP
IN LID SECTION
CONTINUOUS EARTHING SYSTEM
EASY INSTALLATION
HANGING RECESS (FOR
INSTALLATION ABOVE FLOOR
LEVEL)

Better Cable Management



KBS Cable Coating is a water based ablative (non-intumescent) fire protective cable coating especially developed for the fire protection of grouped or bundled electrical cables and for penetration seals. Tough, flexible, water and weather resistant, it has been used worldwide since 1967 for interior and exterior applications.

HOW IT WORKS

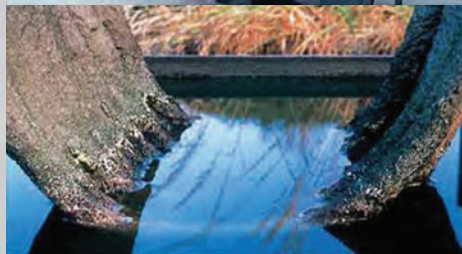
Exposed to fire an endothermic reaction occurs, resulting in a cooling effect for the coated cables. Additionally incombustible gaseous substances are generated producing a strong flame retardant effect. KBS Coating prevents flame spread along vertical or horizontal cables and prolongs circuit integrity without affecting the current carrying capacity.

KBS Coating has a LOI of 100 and is resistant to water, weathering, UV-radiation and

ageing proven by a thirty year outdoor test. Additionally and many others. KBS Coating has a high resistance to many industrial chemicals such as detergents, solvents, lubricants, Diesel fuel, ethylene glycol, fuel oil, lubricating oil, turbine oil etc.

FEATURES

- Compatible with cable sheets
- Lasts the lifetime of cables
- Does not impair the flexibility of cables
- Successfully tested to DIN 4102, IEC332-3, BS476, FM3971 & ASTM D 2863
- Tough enough to sustain physical abuse such as walking on coated cable trays
- Non-toxic, solvent-free, phosphate-free & does not contain asbestos
- Protects cables in all weather and climatic conditions



KBS® COATING

**LASTS FOR THE LIFETIME OF CABLES
DOES NOT DERATE ELECTRICAL CABLES
IS TOTALLY WEATHER AND WATER RESISTANT**

In 1980 a cable tray was laid with 17 cables coated with KBS® Coating, and after complete drying it was placed outdoors in the company grounds. Additional extreme conditions were created by immersing parts of the coated cables in a water-filled tub, exposing them to different water levels caused by changing weather conditions.

THE CONDITIONS

- **Exposed** to the elements
- **30 years** of continuous sun, rain, freezing and thawing
- **Uninterrupted** UV radiation
- **Extreme but realistic** weather

In November 2010 two specimens of the coating from both the air-exposed and water-immersed sections were removed and thoroughly checked under official supervision.

THE RESULTS

- Adhesion of the coating on the cables remained **perfect**, even under water
- **No** UV damage
- **No** cracking
- **No** disintegration
- LOI-value of >100 – **does not burn** in pure oxygen
- **Ablative** properties maintained



CCG E1EX~QS BARRIER GLAND



FEATURES

- For use indoors, outdoors & hazardous areas with unfilled hygroscopic multicore cables
- Two part handling, no loose parts
- Captive Cone & Cone Ring provides an armour clamp & earth bond for steel wire armour & aluminium armour
- Instantly mixed & injected Resin
- Resin forms a 100% barrier seal around the individual cores of the cable
- Prevents explosive gases & moisture transmitting down cable

TECHNICAL DATA

GLAND MATERIAL	Brass (Nickel Plated), Stainless Steel
SEAL MATERIAL	Elastomer Polymer, Quick Setting Barrier Resin
CABLE TYPE	Steel Wire Armour, Aluminium Armour
ARMOUR CLAMPING	Captive Cone and Cone Ring
SEALING AREA	Inner and Outer Sheath
OPTIONAL ACCESSORIES	Adaptor, Earth Tag, Hex Spanner, Locknut, Reducer & Shroud
EQUIPMENT PROTECTION LEVELS	Ex db IIC, Ex eb II, Ex nR, Ex t IIIC
OPERATING TEMPERATURE	-20°C to 95°C
STANDARDS	IEC 60079-0, IEC 60079-1, IEC 60079-7, IEC 60079-15, IEC 60079-31, SANS/IEC 60079-0, SANS/IEC 60079-1, SANS/IEC 60079-7, SANS/IEC 60079-15, SANS/IEC 60079-31

CERTIFICATION

Aus/NZ/IEC SANS/IEC	IECEX ITA 12.0014X
INGRESS PROTECTION	MASC MS/13-028X
	IP66/68 (2m cont.) IEC 60529



RATED PRODUCT



SPARTAN ZONE 1 & 2 FLOODLIGHTS BY RAYTEC

Designed to light up large, open areas such as on offshore oil rigs. The dedicated bracket allows the beam angle to be tilted and easily targeted into the required space.

SPARTAN HIGH POWER FLOOD

ALSO AVAILABLE AS A HIGH BAY



SPARTAN High Power Floods are designed for hazardous environments requiring high performance, high reliability, white-light illumination. Using Raytec's field-proven, long-life LED technology SPARTAN luminaires are ATEX and IEC Ex approved for all Zone 1 & Zone 2 applications.

A unique modular design allows key components to be easily accessed and serviced if required, making inspection and maintenance quicker and easier. Available in a range of different beam patterns, SPARTAN uses CoolExtrude™ thermal management technology, ensuring a much cooler LED operating temperature and up to 60% better heat dissipation compared to traditional lighting solutions, allowing the product to

operate for > 10 years while still delivering a high lumen output of up to 25,000 lumens.

Key Features

- ATEX & IEC Ex approved - Zone 1 & 2
- Ultra long life LED
- High lumen output
- Easy installation, maintenance & inspection
- Remote power supply variants available
- Extreme durability & toughness
- Wide operating temperature range -50° to +50°C
- 0-10V dimming as standard
- DALI compatible
- Five year warranty

Why Raytec?

- UK designed & manufactured
- Manufacturing precision engineered LED products
- Award-winning technology



Five year warranty



ATEX & IEC Ex approved - Zone 1 & 2 (UL/CSA pending, including C1D2)



UK designed & manufactured



#TNVSCANS-KIT

Standard Pipe & Cable Locator Kit

#TNVSCANM-KIT

Pipe & Cable Locator Kit with Metal Detector

VSCAN FEATURES

- Compass (line direction indicator)
- Self-test and calibration verification
- Data logging & data management software
- Configuration utility - personalise your vScan
- Metal detection (TNVSCANM-KIT only)

Removable loudspeaker - output limited to HSE safety levels

Peak level indicator

Compass (line direction indicator)

High contrast display with backlight

Push buttons on/off and menu activation



TRANSMITTER

Output status lights

Speaker volume control



Switch - pulse/continuous output

Output level select

RECEIVER

Vibrate alert

Internal loudspeaker

Rotary gain/sensitivity control

Paddle - navigation/select

Rugged ABS housing with protective bumpers

Battery housing for alkaline or Lithium ion battery packs

USB socket - programming/data transfer

MODES

Power mode

Radio mode

Active modes 33kHz & 131kHz

Sonde mode (33kHz, 640Hz, 512Hz)

Metal locate mode (vScanM only)



VIVAX
METROTECH

WIN A CHILLY BIN SCOOTER

Be in to win – #TransNetHaveABall



TransNet New Zealand Ltd

Auckland

78 Cryers Road
East Tamaki
Auckland
NEW ZEALAND
Ph 0800 442 182
Fax 0800 442 183
PO Box 39 383
Howick, Auckland

Wellington

10 Petone Ave
Petone
Wellington
NEW ZEALAND
Ph 04 576 2530
Fax 04 576 0040
PO Box 39 383
Howick, Auckland

NEW ZEALAND

sales@transnet.co.nz

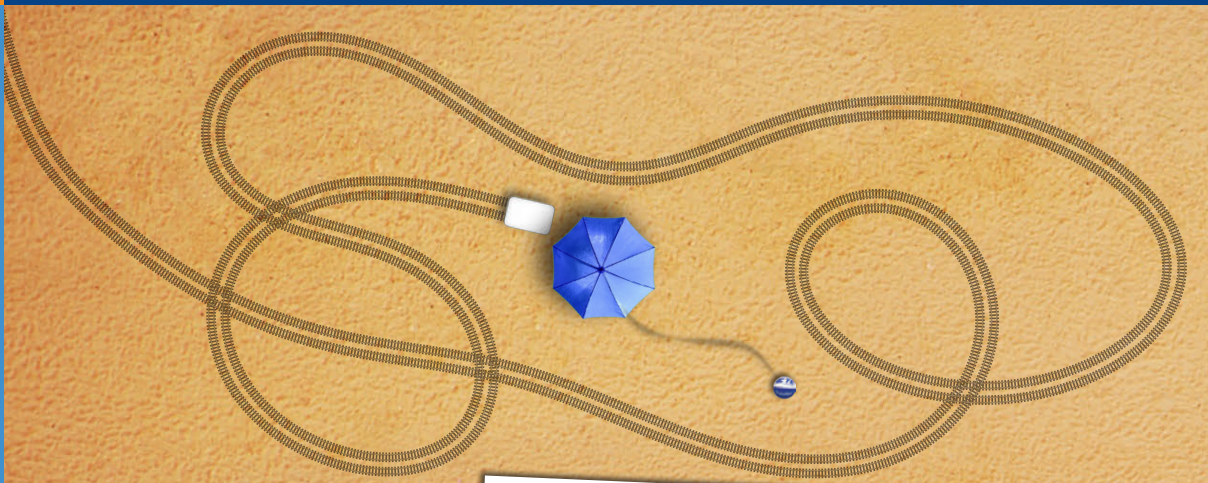
TransNet Tonga

Ma'ufanga

Small Industries
Ma'ufanga
TONGA
Ph +67 627 939
Fax +67 627 976
PO Box 2932
Nukualofa

TONGA

transnet@kalianet.to



ARE YOU HAVING A BALL
THIS SUMMER?
CHECK OUT OUR FACEBOOK
PAGE TRANSNETNZ
#TRANSNETHAVEABALL



TransNet NZ Ltd has made every reasonable effort to ensure the accuracy of this information and it is to the best of our knowledge correct and reliable. Under no circumstances does this constitute an assurance of any particular quality or performance and users should independently evaluate the suitability of products for their desired application. All information in this publication including pricing, drawings, illustrations, images and graphic designs are reflections of our current understanding. TransNet NZ Ltd reserves the right to make any adjustment to this information at any time. Our liability for the products outlined in this publication is set forth in our standard terms and conditions of trade. In case of any potential ambiguities or questions, please contact us for clarification.